

**Exportações Brasileiras de Carne Bovina
Brazilian Beef Exports**

Fonte / Source: SECEX-MDIC



**Categorias / Products:
IN NATURA / FRESH BEEF, INDUSTRIALIZADA / PROCESSED, MIÚDOS /
OFFALS, SALGADAS / SALTED, TRIPAS / CASINGS**

Período: jan/2012 - dez/2012



**Exportações Brasileiras de Carne Bovina
Brazilian Beef Exports
Fonte / Source: SECEX-MDIC**

2012 **2011** **%(2012x2011)**

Julho / July	US\$ (000)	TONNES	US\$/Ton	US\$ (000)	TONNES	US\$/Ton	US\$ (000)	TONNES	US\$/Ton
IN NATURA / FRESH BEEF	377.694	83.235	4.538	316.208	62.767	5.038	19%	33%	-10%
INDUSTRIALIZADA / PROCESSED	55.149	9.288	5.938	48.789	7.451	6.548	13%	25%	-9%
MIÚDOS / OFFALS	41.870	14.575	2.873	34.101	11.397	2.992	23%	28%	-4%
TRIPAS / CASINGS	8.192	1.582	5.178	7.812	1.602	4.875	5%	-1%	6%
SALGADAS / SALTED	1.976	337	5.859	3.653	570	6.403	-46%	-41%	-8%
	484.880	109.017	4.448	410.563	83.788	4.900	18%	30%	-9%

2012 **2011** **%(2012x2011)**

Agosto / August	US\$ (000)	TONNES	US\$/Ton	US\$ (000)	TONNES	US\$/Ton	US\$ (000)	TONNES	US\$/Ton
IN NATURA / FRESH BEEF	421.260	90.615	4.649	347.134	65.830	5.273	21%	38%	-12%
INDUSTRIALIZADA / PROCESSED	55.902	9.833	5.685	61.984	9.470	6.545	-10%	4%	-13%
MIÚDOS / OFFALS	39.209	14.085	2.784	38.825	13.131	2.957	1%	7%	-6%
TRIPAS / CASINGS	7.989	1.619	4.935	8.451	1.736	4.867	-5%	-7%	1%
SALGADAS / SALTED	2.563	443	5.782	2.283	351	6.506	12%	26%	-11%
	526.923	116.596	4.519	458.677	90.518	5.067	15%	29%	-11%

2012 **2011** **%(2012x2011)**

Setembro / September	US\$ (000)	TONNES	US\$/Ton	US\$ (000)	TONNES	US\$/Ton	US\$ (000)	TONNES	US\$/Ton
IN NATURA / FRESH BEEF	420.744	90.835	4.632	390.841	74.169	5.270	8%	22%	-12%
INDUSTRIALIZADA / PROCESSED	46.595	7.975	5.843	65.872	9.743	6.761	-29%	-18%	-14%
MIÚDOS / OFFALS	36.168	12.981	2.786	38.939	12.618	3.086	-7%	3%	-10%
TRIPAS / CASINGS	6.418	1.276	5.032	9.810	1.863	5.267	-35%	-32%	-4%
SALGADAS / SALTED	3.027	523	5.786	3.222	487	6.613	-6%	7%	-13%
	512.953	113.589	4.516	508.683	98.880	5.144	1%	15%	-12%

2012 **2011** **%(2012x2011)**

Outubro / October	US\$ (000)	TONNES	US\$/Ton	US\$ (000)	TONNES	US\$/Ton	US\$ (000)	TONNES	US\$/Ton
IN NATURA / FRESH BEEF	483.543	100.135	4.829	393.007	74.585	5.269	23%	34%	-8%
INDUSTRIALIZADA / PROCESSED	59.371	10.434	5.690	46.139	7.207	6.402	29%	45%	-11%
MIÚDOS / OFFALS	43.987	15.763	2.791	38.945	12.779	3.048	13%	23%	-8%
TRIPAS / CASINGS	10.494	1.808	5.805	9.216	1.901	4.849	14%	-5%	20%
SALGADAS / SALTED	1.489	263	5.665	1.347	208	6.489	11%	27%	-13%
	598.884	128.402	4.664	488.655	96.679	5.054	23%	33%	-8%

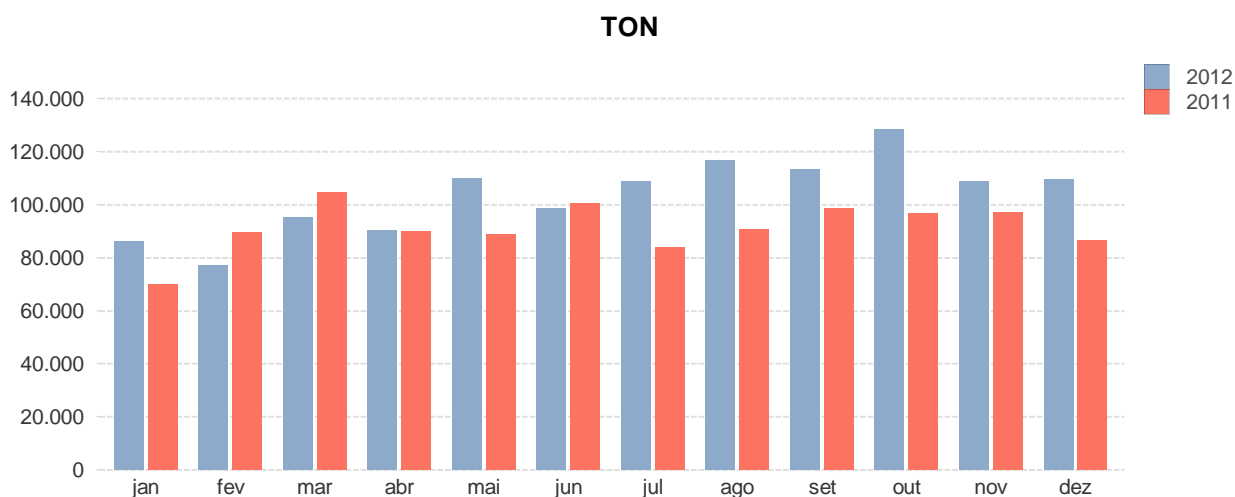
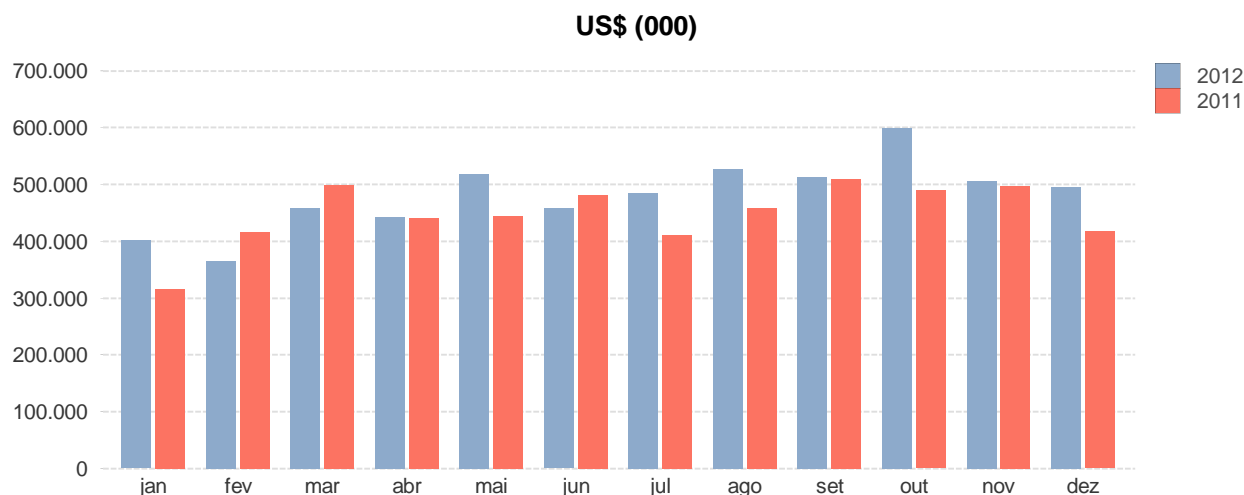
2012 **2011** **%(2012x2011)**

Novembro / November	US\$ (000)	TONNES	US\$/Ton	US\$ (000)	TONNES	US\$/Ton	US\$ (000)	TONNES	US\$/Ton
IN NATURA / FRESH BEEF	399.198	82.659	4.829	380.995	72.590	5.249	5%	14%	-8%
INDUSTRIALIZADA / PROCESSED	53.381	9.242	5.776	60.143	8.856	6.792	-11%	4%	-15%
MIÚDOS / OFFALS	42.875	15.179	2.825	42.044	13.275	3.167	2%	14%	-11%
TRIPAS / CASINGS	5.979	1.212	4.932	10.209	1.917	5.325	-41%	-37%	-7%
SALGADAS / SALTED	4.241	734	5.775	3.369	532	6.331	26%	38%	-9%
	505.675	109.027	4.638	496.760	97.170	5.112	2%	12%	-9%

2012 **2011** **%(2012x2011)**

Dezembro / December	US\$ (000)	TONNES	US\$/Ton	US\$ (000)	TONNES	US\$/Ton	US\$ (000)	TONNES	US\$/Ton
IN NATURA / FRESH BEEF	388.891	83.689	4.647	313.538	63.092	4.970	24%	33%	-6%
INDUSTRIALIZADA / PROCESSED	53.837	9.139	5.891	55.079	8.894	6.193	-2%	3%	-5%
MIÚDOS / OFFALS	41.959	14.671	2.860	40.052	12.881	3.110	5%	14%	-8%
TRIPAS / CASINGS	8.529	1.622	5.258	7.793	1.512	5.154	9%	7%	2%
SALGADAS / SALTED	2.726	487	5.593	684	112	6.079	299%	333%	-8%
	495.942	109.609	4.525	417.146	86.491	4.823	19%	27%	-6%

**EVOLUÇÃO DAS EXPORTAÇÕES DE CARNE BOVINA DO BRASIL
BRAZILIAN BEEF EXPORTS**



jan 2012 - dez 2012

Mes / Month	jan	fev	mar	abr	mai	jun	jul	ago	set	out	nov	dez
US\$ (000)	400.860	364.466	458.360	442.218	518.607	456.783	484.880	526.923	512.953	598.884	505.675	495.942
TONNES	86.105	77.025	95.364	90.280	110.159	98.438	109.017	116.596	113.589	128.402	109.027	109.609
US\$/Ton	4.655	4.732	4.806	4.898	4.708	4.640	4.448	4.519	4.516	4.664	4.638	4.525

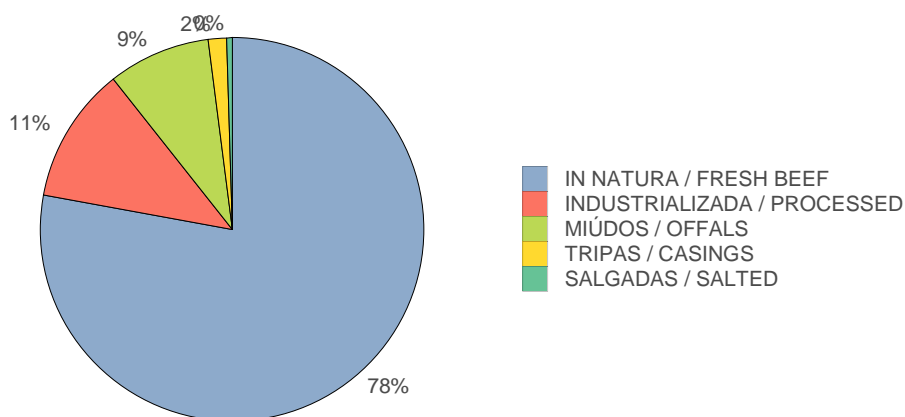


**Exportações Brasileiras de Carne Bovina
Brazilian Beef Exports
Fonte / Source: SECEX-MDIC**

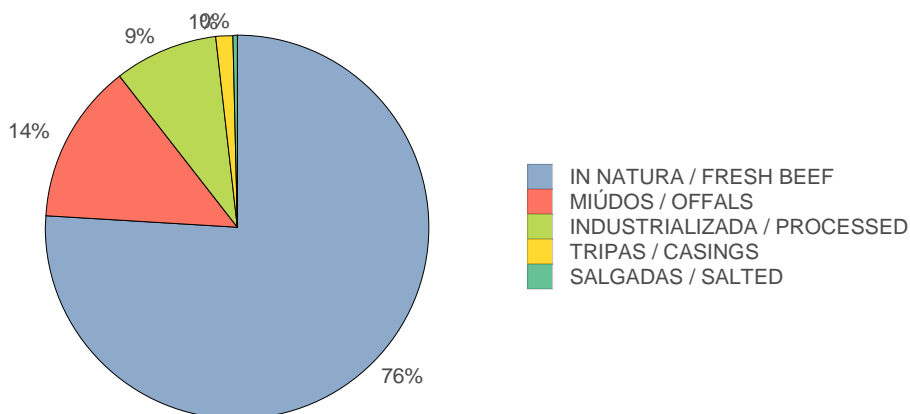
Produto / Product	jan 2012 - dez 2012			jan 2011 - dez 2011			% (2012x2011)		
	US\$ (000)	TONNES	US\$/Ton	US\$ (000)	TONNES	US\$/Ton	US\$ (000)	TONNES	US\$/Ton
IN NATURA / FRESH BEEF	4.490.544	944.556	4.754	4.167.493	819.924	5.083	8%	15%	-6%
INDUSTRIALIZADA / PROCESSED	662.366	108.834	6.086	643.311	104.322	6.167	3%	4%	-1%
MIÚDOS / OFFALS	496.079	168.053	2.952	448.316	150.913	2.971	11%	11%	-1%
TRIPAS / CASINGS	88.949	17.272	5.150	90.733	18.032	5.032	-2%	-4%	2%
SALGADAS / SALTED	28.614	4.895	5.846	25.762	4.119	6.255	11%	19%	-7%
	5.766.552	1.243.610	4.637	5.375.615	1.097.310	4.899	7%	13%	-5%

**EXPORTAÇÕES DE CARNE BOVINA DO BRASIL POR PRODUTOS
BRAZILIAN BEEF EXPORTS PER PRODUCTS**

US\$



TON





Exportações Brasileiras de Carne Bovina
Brazilian Beef Exports
Fonte / Source: SECEX-MDIC
IN NATURA / FRESH BEEF

Destino / Country	ian 2012 - dez 2012			ian 2011 - dez 2011			% (2012x2011)		
	US\$ (000)	TONNES	US\$/Ton	US\$ (000)	TONNES	US\$/Ton	US\$ (000)	TONNES	US\$/Ton
RUSSIA	1.056.843	253.770	4.165	1.013.545	228.772	4.430	4%	11%	-6%
EGYPT	531.930	132.963	4.001	413.481	96.937	4.265	29%	37%	-6%
VENEZUELA	448.083	87.182	5.140	376.348	70.901	5.308	19%	23%	-3%
HONG KONG	431.710	99.419	4.342	327.766	73.851	4.438	32%	35%	-2%
CHILE	376.612	65.436	5.755	200.437	34.244	5.853	88%	91%	-2%
IRAN	320.339	67.018	4.780	687.950	130.475	5.273	-53%	-49%	-9%
ITALY	172.752	23.799	7.259	161.046	19.257	8.363	7%	24%	-13%
SAUDI ARABIA	156.095	33.395	4.674	130.607	27.926	4.677	20%	20%	-0%
NETHERLANDS	142.750	15.713	9.085	142.239	13.136	10.828	0%	20%	-16%
LIBYA	78.667	18.811	4.182	22.243	5.362	4.148	254%	251%	1%
ISRAEL	74.861	14.524	5.154	80.836	15.937	5.072	-7%	-9%	2%
CHINA	72.378	16.480	4.392	9.751	2.680	3.639	642%	515%	21%
LEBANON	71.284	12.151	5.866	96.486	15.393	6.268	-26%	-21%	-6%
UAE	62.534	10.345	6.045	49.407	7.954	6.212	27%	30%	-3%
ALGERIA	55.776	11.150	5.003	38.328	7.218	5.310	46%	54%	-6%
JORDAN	51.063	10.634	4.802	29.905	6.260	4.777	71%	70%	1%
GERMANY	44.909	4.310	10.419	79.789	6.788	11.755	-44%	-36%	-11%
SPAIN	34.842	4.663	7.472	31.439	3.155	9.966	11%	48%	-25%
ANGOLA	34.549	9.231	3.743	29.099	6.369	4.569	19%	45%	-18%
UK	27.354	3.880	7.050	17.925	2.096	8.553	53%	85%	-18%
KUWAIT	26.736	6.196	4.315	16.428	3.659	4.489	63%	69%	-4%
SWEDEN	25.003	1.977	12.644	22.994	1.745	13.174	9%	13%	-4%
SINGAPORE	24.943	5.173	4.821	25.607	5.156	4.966	-3%	0%	-3%
IRAQ	23.769	5.408	4.395	16.101	3.815	4.221	48%	42%	4%
PALESTINE	18.796	4.950	3.797	12.757	2.810	4.540	47%	76%	-16%
PHILIPPINES	13.994	4.121	3.396	27.012	8.092	3.338	-48%	-49%	2%
UKRAINE	10.861	2.750	3.949	14.985	3.704	4.045	-28%	-26%	-2%
SWITZERLAND	8.861	1.000	8.860	7.420	676	10.970	19%	48%	-19%
FINLAND	8.289	600	13.810	7.825	518	15.120	6%	16%	-9%
TUNISIA	7.147	1.496	4.777	5.902	1.304	4.526	21%	15%	6%
ALBANIA	6.029	1.557	3.873	7.428	2.231	3.330	-19%	-30%	16%
QATAR	5.106	568	8.993	2.837	324	8.765	80%	75%	3%
SERBIA	4.642	1.595	2.909	5.741	1.794	3.201	-19%	-11%	-9%
PORTUGAL	4.384	517	8.478	7.029	679	10.349	-38%	-24%	-18%
GEORGIA	3.772	1.316	2.866	1.981	640	3.095	90%	106%	-7%
PERU	3.439	555	6.191	2.324	327	7.104	48%	70%	-13%
AZERBAIJAN	3.310	402	8.229	1.880	259	7.266	76%	55%	13%
NORWAY	3.260	240	13.559	2.240	141	15.864	46%	70%	-15%
KAZAKHSTAN	3.217	941	3.419	2.580	670	3.852	25%	40%	-11%
ARUBA	3.018	553	5.454	2.994	529	5.655	1%	5%	-4%
CROATIA	2.873	630	4.559	1.077	250	4.316	167%	152%	6%
MALAYSIA	2.590	536	4.827	1.040	297	3.495	149%	80%	38%
FRANCE	2.324	517	4.498	3.254	446	7.290	-29%	16%	-38%
TURKEY	2.320	488	4.759	562	116	4.836	313%	320%	-2%
	4.490.544	944.556	4.754	4.167.493	819.924	5.083	8%	15%	-6%



Exportações Brasileiras de Carne Bovina
Brazilian Beef Exports
Fonte / Source: SECEX-MDIC
IN NATURA / FRESH BEEF

Destino / Country	ian 2012 - dez 2012			ian 2011 - dez 2011			% (2012x2011)		
	US\$ (000)	TONNES	US\$/Ton	US\$ (000)	TONNES	US\$/Ton	US\$ (000)	TONNES	US\$/Ton
MONTENEGRO	1.993	440	4.531	1.824	455	4.007	9%	-3%	13%
NETHERLANDS ANTILLES	1.799	346	5.208	2.606	488	5.338	-31%	-29%	-2%
GUINEA	1.707	269	6.346	1.934	247	7.819	-12%	9%	-19%
PARAGUAY	1.549	805	1.924	0	0	-	-	-	-
GREEN CAPE	1.477	244	6.066	2.280	356	6.396	-35%	-32%	-5%
BAHERIN	1.395	215	6.491	1.501	223	6.740	-7%	-3%	-4%
URUGUAY	1.232	267	4.622	144	22	6.550	754%	1.110%	-29%
MACEDONIA	1.207	237	5.092	711	189	3.758	70%	25%	35%
CUBA	1.052	148	7.112	0	0	-	-	-	-
CANARY ISLANDS	1.039	137	7.600	1.996	202	9.895	-48%	-32%	-23%
GREECE	960	224	4.281	486	87	5.608	97%	159%	-24%
OMAN	931	125	7.460	294	38	7.736	217%	229%	-4%
GABON	814	206	3.953	1.572	294	5.346	-48%	-30%	-26%
USA	723	155	4.667	210	51	4.073	245%	201%	15%
CONGO	713	180	3.967	1.005	193	5.204	-29%	-7%	-24%
MALDIVE ISLANDS	700	100	6.989	199	26	7.677	251%	285%	-9%
BELGIUM	698	60	11.538	173	27	6.392	304%	124%	80%
LITHUANIA	670	175	3.829	497	125	3.980	35%	40%	-4%
BOSNIA & HERZEGOVINA	575	113	5.085	849	152	5.573	-32%	-26%	-9%
UZBEKISTAN	571	234	2.444	184	20	9.100	211%	1.057%	-73%
AFGHANISTAN	517	64	8.089	277	25	11.100	87%	156%	-27%
VIETNAM	480	119	4.053	372	83	4.465	29%	42%	-9%
DENMARK	467	50	9.279	1.390	127	10.944	-66%	-60%	-15%
SUDAN	385	49	7.799	0	0	-	-	-	-
LIBERIA	273	47	5.831	558	77	7.249	-51%	-39%	-20%
MOLDOVA	268	79	3.386	447	127	3.516	-40%	-38%	-4%
MAROCCO	256	24	10.826	0	0	-	-	-	-
JAPAN	225	60	3.753	257	75	3.420	-12%	-20%	10%
PANAMA	191	51	3.756	199	27	7.442	-4%	90%	-50%
IRELAND	178	48	3.734	352	66	5.358	-49%	-27%	-30%
NIGERIA	165	26	6.384	111	10	10.800	50%	153%	-41%
SENEGAL	165	80	2.054	1.365	288	4.732	-88%	-72%	-57%
GANA	146	50	2.920	0	0	-	-	-	-
SEYCHELLES	120	21	5.731	0	0	-	-	-	-
GAMBIA	113	11	10.584	115	13	8.991	-1%	-16%	18%
DJIBOUTI	109	12	9.361	0	0	-	-	-	-
HAITI	108	23	4.651	65	22	2.918	66%	4%	59%
ESTONIA	103	8	13.615	184	25	7.412	-44%	-70%	84%
CAYMAN ISLANDS	86	12	7.431	0	0	-	-	-	-
BALARUS	80	25	3.200	0	0	-	-	-	-
YEMEN	69	11	6.104	334	49	6.845	-79%	-77%	-11%
ARMENIA	64	15	4.350	173	75	2.312	-63%	-80%	88%
BERMUDA	61	13	4.624	0	0	-	-	-	-
MARTINICA	49	5	9.545	58	5	11.423	-16%	1%	-16%
	4.490.544	944.556	4.754	4.167.493	819.924	5.083	8%	15%	-6%



Exportações Brasileiras de Carne Bovina
 Brazilian Beef Exports
 Fonte / Source: SECEX-MDIC
IN NATURA / FRESH BEEF

Destino / Country	ian 2012 - dez 2012			ian 2011 - dez 2011			% (2012x2011)		
	US\$ (000)	TONNES	US\$/Ton	US\$ (000)	TONNES	US\$/Ton	US\$ (000)	TONNES	US\$/Ton
IVORY COAST	30	11	2.730	300	29	10.180	-90%	-63%	-73%
GRANADA	12	2	4.913	0	0	-	-	-	-
MAURITANIA	0	0	-	429	100	4.300	-100%	-100%	-
SYRIA	0	0	-	1.123	222	5.069	-100%	-100%	-
BENIN	0	0	-	95	11	8.473	-100%	-100%	-
REUNIAO ISLAND	0	0	-	290	54	5.371	-100%	-100%	-
MAURITIUS	0	0	-	190	37	5.146	-100%	-100%	-
MADAGASCAR	0	0	-	1.297	224	5.781	-100%	-100%	-
SOUTH AFRICA	0	0	-	36	8	4.452	-100%	-100%	-
MALI	0	0	-	390	54	7.230	-100%	-100%	-
	4.490.544	944.556	4.754	4.167.493	819.924	5.083	8%	15%	-6%



Exportações Brasileiras de Carne Bovina
 Brazilian Beef Exports
 Fonte / Source: SECEX-MDIC
INDUSTRIALIZADA / PROCESSED

ian 2012 - dez 2012

ian 2011 - dez 2011

%(2012x2011)

Destino / Country	US\$ (000)	TONNES	US\$/Ton	US\$ (000)	TONNES	US\$/Ton	US\$ (000)	TONNES	US\$/Ton
USA	185.576	17.949	10.339	162.788	12.289	13.247	14%	46%	-22%
UK	174.055	32.688	5.325	178.804	33.228	5.381	-3%	-2%	-1%
ITALY	37.664	4.153	9.069	32.880	3.348	9.820	15%	24%	-8%
NETHERLANDS	31.498	5.230	6.022	68.076	11.018	6.178	-54%	-53%	-3%
BELGIUM	31.060	4.104	7.568	7.485	901	8.310	315%	356%	-9%
JAMAICA	15.089	3.398	4.440	13.412	3.353	4.000	13%	1%	11%
CHILE	14.114	2.368	5.960	8.463	1.259	6.724	67%	88%	-11%
EGYPT	13.614	2.894	4.704	18.793	4.157	4.521	-28%	-30%	4%
FRANCE	12.756	2.135	5.975	10.305	1.922	5.363	24%	11%	11%
CANADA	12.359	2.305	5.362	8.594	1.768	4.862	44%	30%	10%
PORTO RICO	10.939	1.508	7.255	647	84	7.700	1.590%	1.694%	-6%
GERMANY	9.314	1.568	5.940	4.893	881	5.552	90%	78%	7%
JORDAN	9.217	2.739	3.365	7.238	2.555	2.833	27%	7%	19%
JAPAN	8.576	1.550	5.532	19.731	3.091	6.384	-57%	-50%	-13%
TRINIDAD & TOBAGO	6.079	1.534	3.962	4.818	1.240	3.887	26%	24%	2%
SPAIN	5.723	391	14.653	7.374	525	14.042	-22%	-26%	4%
ANGOLA	5.671	1.612	3.518	4.087	1.087	3.761	39%	48%	-6%
IRELAND	5.244	1.005	5.216	5.466	866	6.312	-4%	16%	-17%
SWEDEN	4.732	840	5.631	8.858	1.306	6.783	-47%	-36%	-17%
SAUDI ARABIA	4.354	1.181	3.686	3.792	1.087	3.487	15%	9%	6%
UAE	3.521	927	3.798	3.046	833	3.659	16%	11%	4%
MALTA	3.295	566	5.824	2.225	436	5.108	48%	30%	14%
SINGAPORE	3.250	733	4.436	2.625	622	4.218	24%	18%	5%
GANA	3.220	884	3.642	2.781	783	3.551	16%	13%	3%
BAHAMAS	2.968	738	4.021	2.203	567	3.883	35%	30%	4%
PHILIPPINES	2.883	684	4.213	3.822	955	4.004	-25%	-28%	5%
CONGO	2.878	736	3.909	4.626	1.440	3.213	-38%	-49%	22%
LEBANON	2.629	733	3.587	2.025	619	3.269	30%	18%	10%
MAURITIUS	2.043	455	4.492	1.563	328	4.772	31%	39%	-6%
TURKMENISTAN	1.805	782	2.306	315	122	2.575	473%	539%	-10%
BARBADOS	1.677	409	4.097	3.017	754	4.002	-44%	-46%	2%
KUWAIT	1.673	426	3.926	2.872	764	3.759	-42%	-44%	4%
BENIN	1.626	414	3.930	1.299	354	3.666	25%	17%	7%
GAMBIA	1.624	755	2.151	1.897	879	2.159	-14%	-14%	-0%
GUINEA	1.565	752	2.080	1.115	526	2.120	40%	43%	-2%
PALESTINE	1.492	371	4.019	1.930	512	3.768	-23%	-27%	7%
CUBA	1.468	690	2.129	830	395	2.102	77%	75%	1%
CHINA	1.432	283	5.057	98	22	4.472	1.357%	1.189%	13%
AUSTRALIA	1.377	288	4.784	1.308	316	4.135	5%	-9%	16%
BOLIVIA	1.273	419	3.040	810	265	3.055	57%	58%	-0%
SWITZERLAND	1.228	177	6.920	1.286	116	11.068	-5%	53%	-37%
ALGERIA	1.170	313	3.736	633	143	4.438	85%	120%	-16%
GEORGIA	1.134	488	2.323	531	214	2.479	114%	128%	-6%
NIGERIA	923	240	3.848	792	243	3.257	16%	-1%	18%
	662.366	108.834	6.086	643.311	104.322	6.167	3%	4%	-1%



Exportações Brasileiras de Carne Bovina
 Brazilian Beef Exports
 Fonte / Source: SECEX-MDIC
INDUSTRIALIZADA / PROCESSED

ian 2012 - dez 2012

ian 2011 - dez 2011

%(2012x2011)

Destino / Country	US\$ (000)	TONNES	US\$/Ton	US\$ (000)	TONNES	US\$/Ton	US\$ (000)	TONNES	US\$/Ton
CANARY ISLANDS	820	159	5.164	1.925	356	5.402	-57%	-55%	-4%
OMAN	810	205	3.948	723	195	3.697	12%	5%	7%
QATAR	798	226	3.527	863	236	3.656	-8%	-4%	-4%
SURINAME	788	234	3.365	751	195	3.859	5%	20%	-13%
PARAGUAY	651	242	2.684	1.245	502	2.483	-48%	-52%	8%
PANAMA	648	193	3.357	346	94	3.696	87%	106%	-9%
ST. VICENT & GRENADINES	622	146	4.262	836	200	4.182	-26%	-27%	2%
ISRAEL	571	132	4.311	532	138	3.844	7%	-4%	12%
IRAQ	543	196	2.767	1.827	616	2.965	-70%	-68%	-7%
BELIZE	500	123	4.060	636	153	4.151	-21%	-20%	-2%
TANZANIA	468	115	4.058	0	0	-	-	-	-
ST. LUCIA	432	100	4.337	365	83	4.415	18%	20%	-2%
MOZAMBIQUE	428	127	3.372	114	51	2.217	275%	147%	52%
IVORY COAST	420	138	3.039	593	194	3.053	-29%	-29%	-0%
NEW ZEALAND	413	96	4.291	384	95	4.042	7%	1%	6%
CAMAROES	401	184	2.187	164	75	2.188	145%	145%	-0%
NORWAY	399	70	5.660	448	79	5.677	-11%	-11%	-0%
TOGO	390	101	3.856	142	42	3.385	175%	142%	14%
ANTIGUA E BARBUDA	364	83	4.370	427	106	4.033	-15%	-21%	8%
URUGUAY	362	110	3.287	458	158	2.895	-21%	-30%	14%
KENYA	360	91	3.950	584	179	3.256	-38%	-49%	21%
SEYCHELLES	360	90	4.009	230	67	3.449	56%	34%	16%
DOMINICA	351	80	4.384	339	79	4.290	4%	2%	2%
NETHERLANDS ANTILLES	329	78	4.236	470	112	4.182	-30%	-31%	1%
GUYANA	290	69	4.198	201	57	3.494	44%	20%	20%
FRANCE POLYNESIA	283	52	5.461	362	69	5.276	-22%	-25%	4%
GRANADA	276	68	4.035	895	220	4.060	-69%	-69%	-1%
FINLAND	253	33	7.673	756	98	7.693	-67%	-67%	-0%
UZBEKISTAN	252	104	2.423	115	52	2.206	120%	100%	10%
CAYMAN ISLANDS	192	49	3.934	245	66	3.708	-22%	-26%	6%
SENEGAL	186	84	2.197	329	158	2.084	-44%	-46%	5%
HONG KONG	184	44	4.206	233	105	2.233	-21%	-58%	88%
BAHERIN	179	47	3.798	217	57	3.831	-17%	-16%	-1%
SOUTH AFRICA	171	39	4.376	160	36	4.403	7%	7%	-1%
GABON	164	47	3.474	213	74	2.878	-23%	-36%	21%
MICRONESIA	145	35	4.189	62	17	3.601	135%	102%	16%
GUAM	132	18	7.353	0	0	-	-	-	-
BRUNEI	129	33	3.898	139	35	3.937	-8%	-7%	-1%
BALARUS	120	22	5.328	0	0	-	-	-	-
VENEZUELA	111	18	6.235	0	0	-	-	-	-
PERU	106	5	21.925	0	0	-	-	-	-
ST. TOME & PRINCIPE	103	44	2.348	187	84	2.231	-45%	-48%	5%
CYPRUS	94	20	4.777	85	30	2.848	10%	-34%	68%
SERRA LEOA	90	45	2.003	140	77	1.812	-36%	-42%	11%
	662.366	108.834	6.086	643.311	104.322	6.167	3%	4%	-1%



Exportações Brasileiras de Carne Bovina
 Brazilian Beef Exports
 Fonte / Source: SECEX-MDIC
INDUSTRIALIZADA / PROCESSED

Destino / Country	ian 2012 - dez 2012			ian 2011 - dez 2011			% (2012x2011)		
	US\$ (000)	TONNES	US\$/Ton	US\$ (000)	TONNES	US\$/Ton	US\$ (000)	TONNES	US\$/Ton
TAIWAN	88	5	16.115	80	5	16.003	10%	10%	1%
ARUBA	86	20	4.213	299	71	4.204	-71%	-71%	0%
LIBYA	78	23	3.329	0	0	-	-	-	-
JOHNSTON ISLAND	75	19	3.925	0	0	-	-	-	-
POLAND	72	16	4.590	0	0	-	-	-	-
BERMUDA	70	17	4.044	59	15	4.044	17%	17%	0%
VIRGIN ISLANDS	66	15	4.436	129	29	4.421	-48%	-48%	0%
MADAGASCAR	59	12	4.730	22	8	2.795	163%	56%	69%
LIBERIA	50	25	2.007	79	37	2.167	-37%	-32%	-7%
SOUTH KOREA	48	15	3.202	1.038	287	3.615	-95%	-95%	-11%
ST. CRISTOVAO E NEVES	43	10	4.263	0	0	-	-	-	-
YEMEN	43	12	3.601	6	1	3.784	668%	707%	-5%
COLOMBIA	38	2	22.448	34	2	20.219	11%	-0%	11%
UGANDA	32	13	2.512	233	57	4.082	-86%	-78%	-38%
GREEN CAPE	30	9	3.521	32	11	3.032	-4%	-18%	16%
TIMOR	6	2	3.100	0	0	-	-	-	-
HAITI	5	2	2.800	70	14	4.947	-93%	-87%	-43%
MALDIVE ISLANDS	2	0	4.368	0	0	-	-	-	-
CENTRAL AFRICAN REPUBLIC	0	0	-	1	0	3.638	-100%	-100%	-
CZECH REPUBLIC	0	0	-	1.108	59	18.739	-100%	-100%	-
SYRIA	0	0	-	89	40	2.220	-100%	-100%	-
DJIBOUTI	0	0	-	1	0	3.680	-100%	-100%	-
TAJIKISTAN	0	0	-	140	62	2.264	-100%	-100%	-
KIRIBATI	0	0	-	173	36	4.822	-100%	-100%	-
ANGUILLA	0	0	-	67	16	4.116	-100%	-100%	-
MONACO	0	0	-	105	22	4.700	-100%	-100%	-
RUSSIA	0	0	-	510	75	6.809	-100%	-100%	-
MALI	0	0	-	41	19	2.210	-100%	-100%	-
TURKEY	0	0	-	14	7	2.010	-100%	-100%	-
KAZAKHSTAN	0	0	-	87	37	2.346	-100%	-100%	-
	662.366	108.834	6.086	643.311	104.322	6.167	3%	4%	-1%



Exportações Brasileiras de Carne Bovina
Brazilian Beef Exports
 Fonte / Source: SECEX-MDIC
MIÚDOS / OFFALS

ian 2012 - dez 2012

ian 2011 - dez 2011

%(2012x2011)

Destino / Country	US\$ (000)	TONNES	US\$/Ton	US\$ (000)	TONNES	US\$/Ton	US\$ (000)	TONNES	US\$/Ton
HONG KONG	386.275	121.278	3.185	357.084	113.417	3.148	8%	7%	1%
UKRAINE	16.219	3.962	4.094	9.365	2.386	3.925	73%	66%	4%
RUSSIA	16.201	2.719	5.960	15.392	2.788	5.521	5%	-2%	8%
PERU	13.379	7.751	1.726	12.477	6.918	1.804	7%	12%	-4%
IVORY COAST	7.494	6.924	1.082	5.688	5.563	1.022	32%	24%	6%
VIETNAM	5.696	1.517	3.756	2.535	665	3.809	125%	128%	-1%
EGYPT	4.753	3.213	1.479	6.958	4.111	1.693	-32%	-22%	-13%
CONGO	4.621	3.929	1.176	1.989	1.782	1.116	132%	121%	5%
ITALY	4.260	1.192	3.574	4.153	1.268	3.275	3%	-6%	9%
ANGOLA	4.191	3.190	1.314	2.029	1.478	1.373	107%	116%	-4%
MOLDOVA	3.937	1.371	2.872	1.590	533	2.985	148%	157%	-4%
SPAIN	3.457	1.001	3.455	2.204	691	3.188	57%	45%	8%
KAZAKHSTAN	3.453	712	4.849	3.384	916	3.696	2%	-22%	31%
SAUDI ARABIA	2.742	1.115	2.459	1.795	694	2.589	53%	61%	-5%
UAE	2.232	588	3.795	989	282	3.507	126%	109%	8%
ISRAEL	2.032	590	3.445	2.192	841	2.608	-7%	-30%	32%
AZERBAIJAN	1.361	549	2.477	2.959	904	3.272	-54%	-39%	-24%
GABON	1.273	1.010	1.260	1.284	1.247	1.029	-1%	-19%	22%
USA	1.142	238	4.804	1.549	394	3.931	-26%	-40%	22%
PALESTINE	1.113	561	1.983	579	335	1.728	92%	68%	15%
PARAGUAY	1.097	493	2.227	69	13	5.177	1.485%	3.584%	-57%
GERMANY	881	231	3.821	696	163	4.279	27%	42%	-11%
SOUTH AFRICA	698	354	1.971	801	400	2.002	-13%	-11%	-2%
LEBANON	678	337	2.014	699	251	2.780	-3%	34%	-28%
LIBERIA	670	509	1.317	636	487	1.305	5%	4%	1%
PORTUGAL	632	197	3.213	572	207	2.756	11%	-5%	17%
GUINEA	574	463	1.240	70	55	1.280	716%	742%	-3%
KUWAIT	528	173	3.049	395	158	2.499	34%	9%	22%
URUGUAY	515	231	2.230	0	0	-	-	-	-
NETHERLANDS ANTILLES	416	93	4.490	375	82	4.559	11%	13%	-2%
CHINA	387	265	1.464	433	150	2.881	-11%	76%	-49%
QATAR	344	93	3.692	363	88	4.109	-5%	5%	-10%
KYRGYZSTAN	307	99	3.092	103	25	4.126	197%	296%	-25%
THAILAND	302	76	3.949	103	27	3.756	193%	178%	5%
GEORGIA	282	93	3.030	9	3	2.985	3.130%	3.082%	2%
ARUBA	241	62	3.867	113	33	3.455	114%	91%	12%
SWEDEN	195	244	800	0	0	-	-	-	-
JORDAN	167	127	1.316	285	99	2.875	-41%	28%	-54%
LITHUANIA	164	54	3.020	0	0	-	-	-	-
BELGIUM	129	24	5.385	92	26	3.590	40%	-6%	50%
HUNGARY	104	25	4.150	0	0	-	-	-	-
TURKEY	100	34	2.979	183	61	3.000	-45%	-45%	-1%
POLAND	99	42	2.355	0	0	-	-	-	-
COMOROS ISLANDS	99	96	1.033	23	24	950	334%	299%	9%
TOTAL	496.079	168.053	2.952	448.316	150.913	2.971	11%	11%	-1%



Exportações Brasileiras de Carne Bovina
 Brazilian Beef Exports
 Fonte / Source: SECEX-MDIC
MIÚDOS / OFFALS

ian 2012 - dez 2012

ian 2011 - dez 2011

%(2012x2011)

Destino / Country	US\$ (000)	TONNES	US\$/Ton	US\$ (000)	TONNES	US\$/Ton	US\$ (000)	TONNES	US\$/Ton
NETHERLANDS	86	33	2.617	115	39	2.934	-25%	-16%	-11%
ROMANIA	72	15	4.651	0	0	-	-	-	-
ALBANIA	70	20	3.452	2.552	328	7.792	-97%	-94%	-56%
SWITZERLAND	68	26	2.630	127	20	6.436	-46%	32%	-59%
PANAMA	67	26	2.565	0	0	-	-	-	-
FRANCE	42	39	1.078	308	78	3.968	-86%	-50%	-73%
OMAN	40	9	4.406	5	1	4.500	766%	785%	-2%
LETONIA	36	5	7.063	0	0	-	-	-	-
BALARUS	31	5	5.978	0	0	-	-	-	-
GANA	30	25	1.200	78	52	1.500	-61%	-52%	-20%
UK	26	5	5.694	0	0	-	-	-	-
PORTO RICO	22	7	3.249	0	0	-	-	-	-
SEYCHELLES	18	4	4.047	0	0	-	-	-	-
GREEN CAPE	18	6	2.840	7	2	3.492	163%	224%	-19%
BAHERIN	12	3	4.352	0	0	-	-	-	-
IRAQ	0	0	2.742	1.812	527	3.441	-100%	-100%	-20%
AFGHANISTAN	0	0	-	77	25	3.010	-100%	-100%	-
IRAN	0	0	-	417	75	5.564	-100%	-100%	-
JAPAN	0	0	-	86	25	3.452	-100%	-100%	-
LIBYA	0	0	-	52	33	1.592	-100%	-100%	-
ZIMBABWE	0	0	-	42	50	850	-100%	-100%	-
MADAGASCAR	0	0	-	48	10	4.777	-100%	-100%	-
SERBIA	0	0	-	373	83	4.485	-100%	-100%	-
	496.079	168.053	2.952	448.316	150.913	2.971	11%	11%	-1%



Exportações Brasileiras de Carne Bovina
 Brazilian Beef Exports
 Fonte / Source: SECEX-MDIC
SALGADAS / SALTED

Destino / Country	ian 2012 - dez 2012			ian 2011 - dez 2011			% (2012x2011)		
	US\$ (000)	TONNES	US\$/Ton	US\$ (000)	TONNES	US\$/Ton	US\$ (000)	TONNES	US\$/Ton
ANGOLA	28.375	4.852	5.848	25.613	4.096	6.253	11%	18%	-6%
URUGUAY	125	23	5.545	0	0	-	-	-	-
BOLIVIA	104	18	5.770	125	19	6.516	-17%	-6%	-11%
NETHERLANDS	4	1	6.278	0	0	-	-	-	-
ISRAEL	4	1	3.498	0	0	-	-	-	-
PARAGUAY	2	0	9.144	24	4	6.731	-91%	-94%	36%
EQUATOR	0	0	7.365	1	0	8.000	-17%	-10%	-8%
	28.614	4.895	5.846	25.762	4.119	6.255	11%	19%	-7%



Exportações Brasileiras de Carne Bovina
 Brazilian Beef Exports
 Fonte / Source: SECEX-MDIC
TRIPAS / CASINGS

ian 2012 - dez 2012

ian 2011 - dez 2011

%(2012x2011)

Destino / Country	US\$ (000)	TONNES	US\$/Ton	US\$ (000)	TONNES	US\$/Ton	US\$ (000)	TONNES	US\$/Ton
RUSSIA	29.669	5.234	5.668	30.968	5.905	5.245	-4%	-11%	8%
UKRAINE	17.813	3.426	5.200	16.591	3.359	4.940	7%	2%	5%
GERMANY	6.113	955	6.400	4.674	698	6.693	31%	37%	-4%
ITALY	4.970	779	6.377	5.409	960	5.635	-8%	-19%	13%
SPAIN	4.115	876	4.697	4.917	1.115	4.409	-16%	-21%	7%
HONG KONG	3.131	563	5.558	6.397	1.190	5.376	-51%	-53%	3%
LEBANON	2.940	1.084	2.711	5.582	1.484	3.761	-47%	-27%	-28%
USA	2.850	470	6.058	2.032	390	5.209	40%	21%	16%
ALBANIA	2.184	365	5.981	3.709	592	6.263	-41%	-38%	-5%
NETHERLANDS	1.546	267	5.784	1.653	261	6.334	-6%	2%	-9%
LETONIA	1.534	285	5.377	0	0	-	-	-	-
TURKEY	1.426	296	4.817	1.345	256	5.244	6%	15%	-8%
KAZAKHSTAN	1.387	231	5.996	388	59	6.617	258%	295%	-9%
PORTUGAL	1.248	289	4.311	0	0	-	-	-	-
ESTONIA	1.201	203	5.925	114	20	5.638	951%	900%	5%
SWITZERLAND	1.103	184	5.998	2.038	285	7.148	-46%	-35%	-16%
EGYPT	973	552	1.761	681	455	1.499	43%	22%	17%
SOUTH AFRICA	915	271	3.371	1.231	273	4.504	-26%	-1%	-25%
FRANCE	741	133	5.551	1.164	188	6.194	-36%	-29%	-10%
SERBIA	670	187	3.576	89	21	4.158	653%	776%	-14%
POLAND	460	91	5.036	0	0	-	-	-	-
ROMANIA	294	49	5.958	0	0	-	-	-	-
PARAGUAY	283	79	3.582	0	0	-	-	-	-
ANGOLA	280	189	1.485	253	175	1.450	11%	8%	2%
PAKISTAN	197	42	4.718	386	84	4.601	-49%	-50%	3%
BALARUS	174	37	4.746	0	0	-	-	-	-
NORWAY	157	21	7.630	0	0	-	-	-	-
AUSTRIA	152	20	7.656	0	0	-	-	-	-
LITHUANIA	115	21	5.589	0	0	-	-	-	-
BELGIUM	107	23	4.659	0	0	-	-	-	-
BOSNIA & HERZEGOVINA	103	21	4.898	205	42	4.920	-50%	-50%	-0%
JAPAN	90	24	3.754	215	81	2.665	-58%	-70%	41%
ISRAEL	8	1	7.482	6	1	5.867	48%	16%	28%
URUGUAY	1	0	9.609	3	0	7.077	-78%	-84%	36%
UK	0	0	-	87	21	4.169	-100%	-100%	-
MOLDOVA	0	0	-	82	18	4.645	-100%	-100%	-
CHINA	0	0	-	453	94	4.795	-100%	-100%	-
PERU	0	0	-	62	5	12.448	-100%	-100%	-
	88.949	17.272	5.150	90.733	18.032	5.032	-2%	-4%	2%



Exportações Brasileiras de Carne Bovina
Brazilian Beef Exports
Fonte / Source: SECEX-MDIC
TOTAL POR PAÍS / TOTAL PER COUNTRY

Destino / Country	ian 2012 - dez 2012			ian 2011 - dez 2011			% (2012x2011)		
	US\$ (000)	TONNES	US\$/Ton	US\$ (000)	TONNES	US\$/Ton	US\$ (000)	TONNES	US\$/Ton
RUSSIA	1.102.713	261.722	4.213	1.060.415	237.539	4.464	4%	10%	-6%
HONG KONG	821.300	221.304	3.711	691.481	188.562	3.667	19%	17%	1%
EGYPT	551.270	139.623	3.948	439.914	105.659	4.164	25%	32%	-5%
VENEZUELA	448.193	87.199	5.140	376.348	70.901	5.308	19%	23%	-3%
CHILE	390.726	67.804	5.763	208.899	35.503	5.884	87%	91%	-2%
IRAN	320.339	67.018	4.780	688.367	130.550	5.273	-53%	-49%	-9%
ITALY	219.646	29.924	7.340	203.489	24.833	8.194	8%	20%	-10%
UK	201.434	36.573	5.508	196.815	35.344	5.569	2%	3%	-1%
USA	190.291	18.812	10.115	166.578	13.125	12.692	14%	43%	-20%
NETHERLANDS	175.883	21.244	8.279	212.083	24.455	8.672	-17%	-13%	-5%
SAUDI ARABIA	163.191	35.692	4.572	136.194	29.707	4.585	20%	20%	-0%
LIBYA	78.745	18.834	4.181	22.295	5.395	4.133	253%	249%	1%
LEBANON	77.531	14.305	5.420	104.792	17.747	5.905	-26%	-19%	-8%
ISRAEL	77.476	15.248	5.081	83.565	16.916	4.940	-7%	-10%	3%
CHINA	74.197	17.028	4.358	10.735	2.947	3.643	591%	478%	20%
ANGOLA	73.067	19.074	3.831	61.082	13.205	4.626	20%	44%	-17%
UAE	68.288	11.860	5.758	53.443	9.069	5.893	28%	31%	-2%
GERMANY	61.217	7.064	8.666	90.053	8.530	10.557	-32%	-17%	-18%
JORDAN	60.447	13.500	4.478	37.428	8.914	4.199	62%	51%	7%
ALGERIA	56.946	11.463	4.968	38.961	7.361	5.293	46%	56%	-6%
SPAIN	48.138	6.930	6.946	45.934	5.486	8.372	5%	26%	-17%
UKRAINE	44.894	10.138	4.428	40.942	9.449	4.333	10%	7%	2%
BELGIUM	31.994	4.212	7.596	7.750	953	8.129	313%	342%	-7%
SWEDEN	29.930	3.062	9.776	31.852	3.051	10.439	-6%	0%	-6%
KUWAIT	28.937	6.796	4.258	19.696	4.582	4.299	47%	48%	-1%
SINGAPORE	28.193	5.906	4.774	28.232	5.778	4.886	-0%	2%	-2%
IRAQ	24.313	5.604	4.338	19.741	4.958	3.982	23%	13%	9%
PALESTINE	21.402	5.883	3.638	15.266	3.657	4.175	40%	61%	-13%
PERU	16.924	8.311	2.036	14.863	7.250	2.050	14%	15%	-1%
PHILIPPINES	16.877	4.805	3.513	30.833	9.046	3.408	-45%	-47%	3%
FRANCE	15.863	2.824	5.617	15.031	2.633	5.707	6%	7%	-2%
JAMAICA	15.089	3.398	4.440	13.412	3.353	4.000	13%	1%	11%
CANADA	12.359	2.305	5.362	8.594	1.768	4.862	44%	30%	10%
SWITZERLAND	11.260	1.387	8.116	10.871	1.097	9.906	4%	26%	-18%
PORTO RICO	10.961	1.515	7.237	647	84	7.700	1.594%	1.702%	-6%
JAPAN	8.892	1.634	5.440	20.289	3.271	6.202	-56%	-50%	-12%
FINLAND	8.542	633	13.491	8.581	616	13.934	-0%	3%	-3%
ALBANIA	8.283	1.942	4.265	13.689	3.150	4.345	-39%	-38%	-2%
CONGO	8.212	4.845	1.695	7.620	3.414	2.232	8%	42%	-24%
KAZAKHSTAN	8.057	1.885	4.275	6.439	1.681	3.830	25%	12%	12%
IVORY COAST	7.944	7.073	1.123	6.581	5.787	1.137	21%	22%	-1%
TUNISIA	7.147	1.496	4.777	5.902	1.304	4.526	21%	15%	6%
PORTUGAL	6.264	1.003	6.244	7.601	887	8.573	-18%	13%	-27%
QATAR	6.248	887	7.043	4.063	648	6.270	54%	37%	12%
	5.766.552	1.243.610	4.637	5.375.615	1.097.310	4.899	7%	13%	-5%



Exportações Brasileiras de Carne Bovina
Brazilian Beef Exports
Fonte / Source: SECEX-MDIC
TOTAL POR PAÍS / TOTAL PER COUNTRY

Destino / Country	ian 2012 - dez 2012			ian 2011 - dez 2011			%(2012x2011)		
	US\$ (000)	TONNES	US\$/Ton	US\$ (000)	TONNES	US\$/Ton	US\$ (000)	TONNES	US\$/Ton
VIETNAM	6.177	1.635	3.777	2.907	749	3.882	112%	118%	-3%
TRINIDAD & TOBAGO	6.079	1.534	3.962	4.818	1.240	3.887	26%	24%	2%
IRELAND	5.422	1.053	5.148	5.819	932	6.245	-7%	13%	-18%
SERBIA	5.312	1.783	2.979	6.202	1.898	3.268	-14%	-6%	-9%
GEORGIA	5.187	1.897	2.734	2.520	857	2.941	106%	121%	-7%
AZERBAIJAN	4.671	952	4.908	4.838	1.163	4.161	-3%	-18%	18%
MOLDOVA	4.205	1.450	2.900	2.119	677	3.128	98%	114%	-7%
TURKEY	3.847	817	4.707	2.104	441	4.774	83%	85%	-1%
GUINEA	3.846	1.484	2.591	3.119	828	3.766	23%	79%	-31%
NORWAY	3.816	331	11.512	2.688	220	12.211	42%	51%	-6%
PARAGUAY	3.582	1.619	2.212	1.338	519	2.581	168%	212%	-14%
GANA	3.396	959	3.541	2.858	835	3.423	19%	15%	3%
ARUBA	3.345	636	5.258	3.406	633	5.379	-2%	0%	-2%
MALTA	3.295	566	5.824	2.225	436	5.108	48%	30%	14%
BAHAMAS	2.968	738	4.021	2.203	567	3.883	35%	30%	4%
CROATIA	2.873	630	4.559	1.077	250	4.316	167%	152%	6%
MALAYSIA	2.590	536	4.827	1.040	297	3.495	149%	80%	38%
NETHERLANDS ANTILLES	2.544	516	4.932	3.450	683	5.054	-26%	-24%	-2%
CUBA	2.520	838	3.008	830	395	2.102	203%	112%	43%
GABON	2.251	1.264	1.781	3.069	1.615	1.900	-27%	-22%	-6%
URUGUAY	2.235	630	3.546	606	181	3.352	269%	249%	6%
MAURITIUS	2.043	455	4.492	1.753	365	4.810	17%	25%	-7%
MONTENEGRO	1.993	440	4.531	1.824	455	4.007	9%	-3%	13%
CANARY ISLANDS	1.859	296	6.291	3.921	558	7.026	-53%	-47%	-10%
TURKMENISTAN	1.805	782	2.306	315	122	2.575	473%	539%	-10%
SOUTH AFRICA	1.784	665	2.684	2.227	718	3.104	-20%	-7%	-14%
OMAN	1.781	339	5.253	1.021	234	4.355	74%	45%	21%
GAMBIA	1.737	766	2.269	2.012	891	2.257	-14%	-14%	1%
BARBADOS	1.677	409	4.097	3.017	754	4.002	-44%	-46%	2%
BENIN	1.626	414	3.930	1.394	366	3.813	17%	13%	3%
BAHERIN	1.587	265	5.988	1.717	279	6.151	-8%	-5%	-3%
LETONIA	1.570	290	5.407	0	0	-	-	-	-
GREEN CAPE	1.526	259	5.901	2.319	369	6.285	-34%	-30%	-6%
BOLIVIA	1.377	437	3.153	935	284	3.289	47%	54%	-4%
AUSTRALIA	1.377	288	4.784	1.308	316	4.135	5%	-9%	16%
ESTONIA	1.303	210	6.200	298	45	6.614	337%	366%	-6%
MACEDONIA	1.207	237	5.092	711	189	3.758	70%	25%	35%
NIGERIA	1.089	266	4.095	903	254	3.562	21%	5%	15%
LIBERIA	993	581	1.710	1.273	601	2.119	-22%	-3%	-19%
GREECE	960	224	4.281	486	87	5.608	97%	159%	-24%
LITHUANIA	949	250	3.799	497	125	3.980	91%	100%	-5%
PANAMA	906	270	3.356	544	120	4.527	66%	124%	-26%
UZBEKISTAN	823	338	2.438	299	72	4.135	176%	368%	-41%
SURINAME	788	234	3.365	751	195	3.859	5%	20%	-13%
TOTAL	5.766.552	1.243.610	4.637	5.375.615	1.097.310	4.899	7%	13%	-5%



Exportações Brasileiras de Carne Bovina
Brazilian Beef Exports
Fonte / Source: SECEX-MDIC
TOTAL POR PAÍS / TOTAL PER COUNTRY

Destino / Country	ian 2012 - dez 2012			ian 2011 - dez 2011			%(2012x2011)		
	US\$ (000)	TONNES	US\$/Ton	US\$ (000)	TONNES	US\$/Ton	US\$ (000)	TONNES	US\$/Ton
MALDIVE ISLANDS	702	101	6.976	199	26	7.677	252%	287%	-9%
BOSNIA & HERZEGOVINA	678	134	5.055	1.054	194	5.433	-36%	-31%	-7%
POLAND	631	149	4.232	0	0	-	-	-	-
ST. VICENT & GRENADINES	622	146	4.262	836	200	4.182	-26%	-27%	2%
AFGHANISTAN	517	64	8.089	353	50	7.011	46%	27%	15%
BELIZE	500	123	4.060	636	153	4.151	-21%	-20%	-2%
SEYCHELLES	497	115	4.323	230	67	3.449	116%	73%	25%
TANZANIA	468	115	4.058	0	0	-	-	-	-
DENMARK	467	50	9.279	1.390	127	10.944	-66%	-60%	-15%
ST. LUCIA	432	100	4.337	365	83	4.415	18%	20%	-2%
MOZAMBIQUE	428	127	3.372	114	51	2.217	275%	147%	52%
NEW ZEALAND	413	96	4.291	384	95	4.042	7%	1%	6%
BALARUS	404	89	4.530	0	0	-	-	-	-
CAMAROES	401	184	2.187	164	75	2.188	145%	145%	-0%
TOGO	390	101	3.856	142	42	3.385	175%	142%	14%
SUDAN	385	49	7.799	0	0	-	-	-	-
ROMANIA	366	65	5.646	0	0	-	-	-	-
ANTIGUA E BARBUDA	364	83	4.370	427	106	4.033	-15%	-21%	8%
KENYA	360	91	3.950	584	179	3.256	-38%	-49%	21%
DOMINICA	351	80	4.384	339	79	4.290	4%	2%	2%
SENEGAL	350	165	2.127	1.693	446	3.796	-79%	-63%	-44%
KYRGYZSTAN	307	99	3.092	103	25	4.126	197%	296%	-25%
THAILAND	302	76	3.949	103	27	3.756	193%	178%	5%
GUYANA	290	69	4.198	201	57	3.494	44%	20%	20%
GRANADA	288	71	4.066	895	220	4.060	-68%	-68%	0%
FRANCE POLYNESIA	283	52	5.461	362	69	5.276	-22%	-25%	4%
CAYMAN ISLANDS	278	60	4.607	245	66	3.708	14%	-9%	24%
MAROCCO	256	24	10.826	0	0	-	-	-	-
PAKISTAN	197	42	4.718	386	84	4.601	-49%	-50%	3%
AUSTRIA	152	20	7.656	0	0	-	-	-	-
MICRONESIA	145	35	4.189	62	17	3.601	135%	102%	16%
GUAM	132	18	7.353	0	0	-	-	-	-
BERMUDA	131	30	4.296	59	15	4.044	120%	107%	6%
BRUNEI	129	33	3.898	139	35	3.937	-8%	-7%	-1%
HAITI	113	25	4.518	136	37	3.708	-16%	-31%	22%
YEMEN	111	23	4.822	340	50	6.756	-67%	-54%	-29%
DJIBOUTI	109	12	9.361	1	0	3.680	19.204%	7.488%	154%
HUNGARY	104	25	4.150	0	0	-	-	-	-
ST. TOME & PRINCIPE	103	44	2.348	187	84	2.231	-45%	-48%	5%
COMOROS ISLANDS	99	96	1.033	23	24	950	334%	299%	9%
CYPRUS	94	20	4.777	85	30	2.848	10%	-34%	68%
SERRA LEOA	90	45	2.003	140	77	1.812	-36%	-42%	11%
TAIWAN	88	5	16.115	80	5	16.003	10%	10%	1%
JOHNSTON ISLAND	75	19	3.925	0	0	-	-	-	-
TOTAL	5.766.552	1.243.610	4.637	5.375.615	1.097.310	4.899	7%	13%	-5%



Exportações Brasileiras de Carne Bovina
Brazilian Beef Exports
Fonte / Source: SECEX-MDIC
TOTAL POR PAÍS / TOTAL PER COUNTRY

Destino / Country	ian 2012 - dez 2012			ian 2011 - dez 2011			% (2012x2011)		
	US\$ (000)	TONNES	US\$/Ton	US\$ (000)	TONNES	US\$/Ton	US\$ (000)	TONNES	US\$/Ton
VIRGIN ISLANDS	66	15	4.436	129	29	4.421	-48%	-48%	0%
ARMENIA	64	15	4.350	173	75	2.312	-63%	-80%	88%
MADAGASCAR	59	12	4.730	1.367	242	5.641	-96%	-95%	-16%
MARTINICA	49	5	9.545	58	5	11.423	-16%	1%	-16%
SOUTH KOREA	48	15	3.202	1.038	287	3.615	-95%	-95%	-11%
ST. CRISTOVAO E NEVES	43	10	4.263	0	0	-	-	-	-
COLOMBIA	38	2	22.448	34	2	20.219	11%	-0%	11%
UGANDA	32	13	2.512	233	57	4.082	-86%	-78%	-38%
TIMOR	6	2	3.100	0	0	-	-	-	-
EQUATOR	0	0	7.365	1	0	8.000	-17%	-10%	-8%
MONACO	0	0	-	105	22	4.700	-100%	-100%	-
ZIMBABWE	0	0	-	42	50	850	-100%	-100%	-
REUNIAO ISLAND	0	0	-	290	54	5.371	-100%	-100%	-
CENTRAL AFRICAN REPUBLIC	0	0	-	1	0	3.638	-100%	-100%	-
CZECH REPUBLIC	0	0	-	1.108	59	18.739	-100%	-100%	-
TAJIKISTAN	0	0	-	140	62	2.264	-100%	-100%	-
ANGUILLA	0	0	-	67	16	4.116	-100%	-100%	-
MALI	0	0	-	431	72	5.947	-100%	-100%	-
MAURITANIA	0	0	-	429	100	4.300	-100%	-100%	-
KIRIBATI	0	0	-	173	36	4.822	-100%	-100%	-
SYRIA	0	0	-	1.212	261	4.634	-100%	-100%	-
	5.766.552	1.243.610	4.637	5.375.615	1.097.310	4.899	7%	13%	-5%